



THREAT SHIELD

BEHAVIOURAL THREAT ASSESSMENT AND MANAGEMENT

ASSESS

MITIGATE

MANAGE

**Join at slido.com
#28669578**



THREAT SHIELD

BEHAVIOURAL THREAT ASSESSMENT AND MANAGEMENT

ASSESS

MITIGATE

MANAGE

Threat Assessment and Management in Intimate Partner Violence

EMPOWERING CHANGE - PAR CONFERENCE

Ottawa, Ontario

May 27th, 2025



THREAT SHIELD

BEHAVIOURAL THREAT ASSESSMENT AND MANAGEMENT

ASSESS

MITIGATE

MANAGE

**Join at slido.com
#28669578**



What field of work are you in?



What level of knowledge or experience do you have with BTAM?



If you could turn ANY activity into an Olympic Sport, what would you win a gold medal in?

KEY CONCEPTS



FUNDAMENTALS

WHAT IS THREAT ASSESSMENT?

THREAT ASSESSMENT AND IPV



ASSESSING THREATS

RISK FACTORS

THE B-SAFER



SCENARIO

SAMPLE CASE

WHAT DO YOU THINK?



THREAT SHIELD

BEHAVIOURAL THREAT ASSESSMENT AND MANAGEMENT

ASSESS

MITIGATE

MANAGE



- **FUNDAMENTALS**

- WHAT IS IT?
- THREAT ASSESSMENT AND IPV



THREAT SHIELD

BEHAVIOURAL THREAT ASSESSMENT AND MANAGEMENT

ASSESS

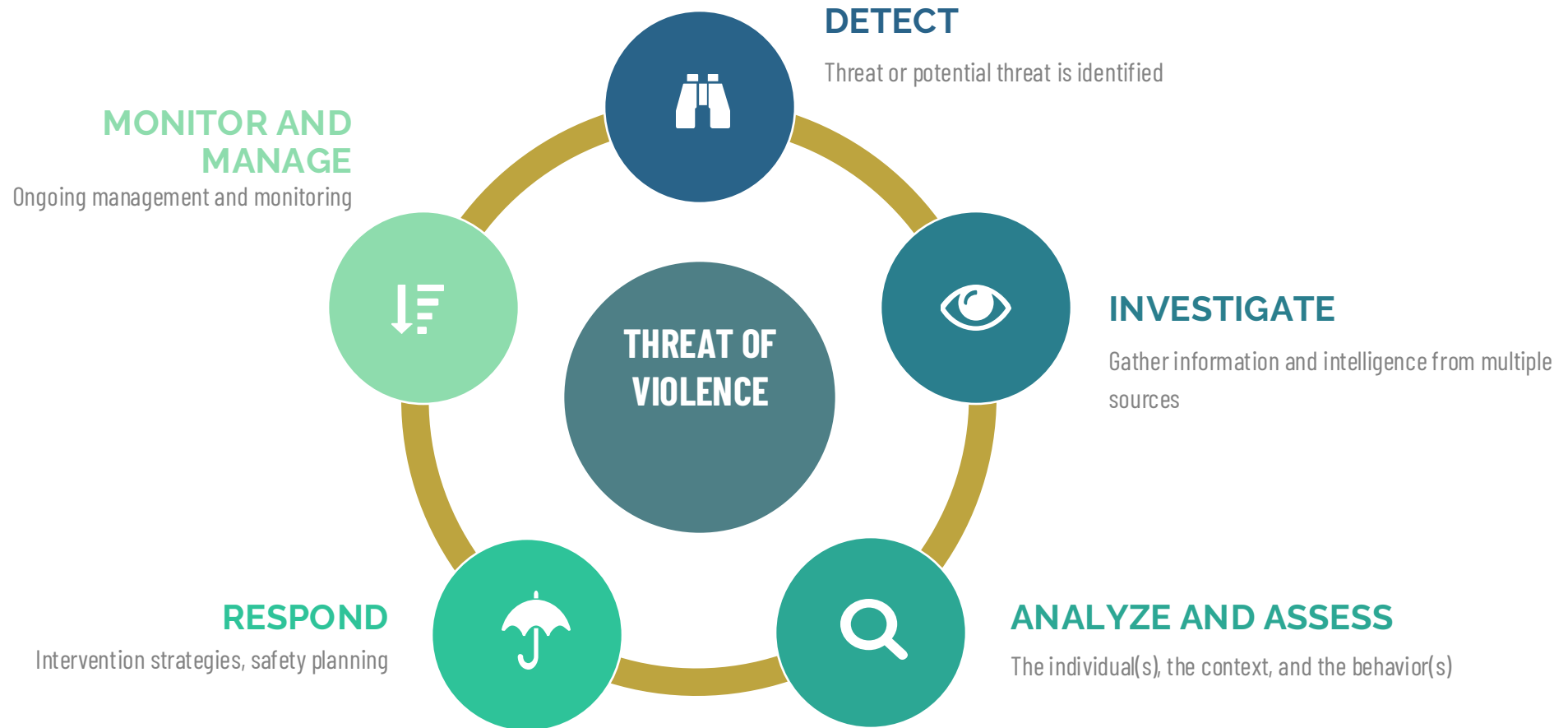
MITIGATE

MANAGE

Behavioural Threat Assessment refers to the **investigative** and **analytical** process followed by a **professional** qualified by education, training, or **experience** to determine the **nature and level** of the **risk of violence** presented by a person; and the **steps** that could be taken to **respond to**, **manage**, and **mitigate the risk**.

ASIS International

WHAT IS THE PURPOSE OF BEHAVIOURAL THREAT ASSESSMENT?





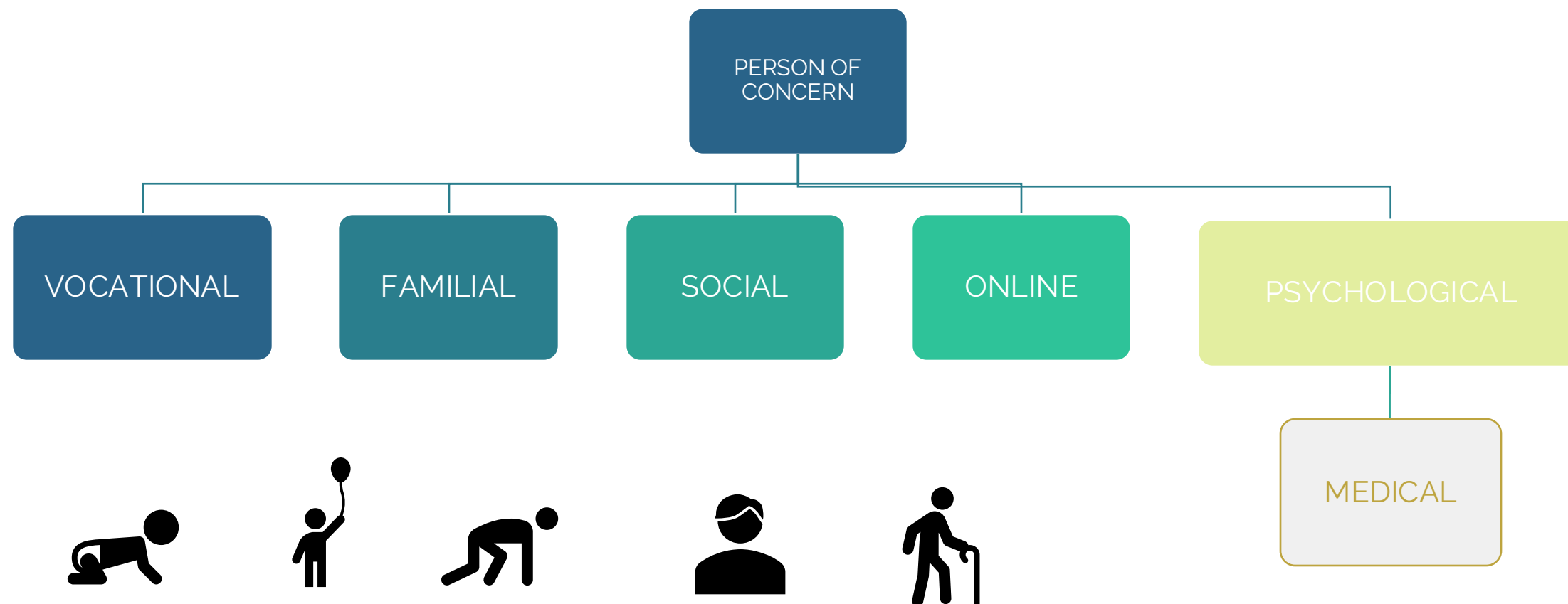
66

*It is difficult to make
predictions...especially
about the future.*

- Yogi Berra (sort of)

INVESTIGATIVE DOMAINS

Beyond a criminal record...



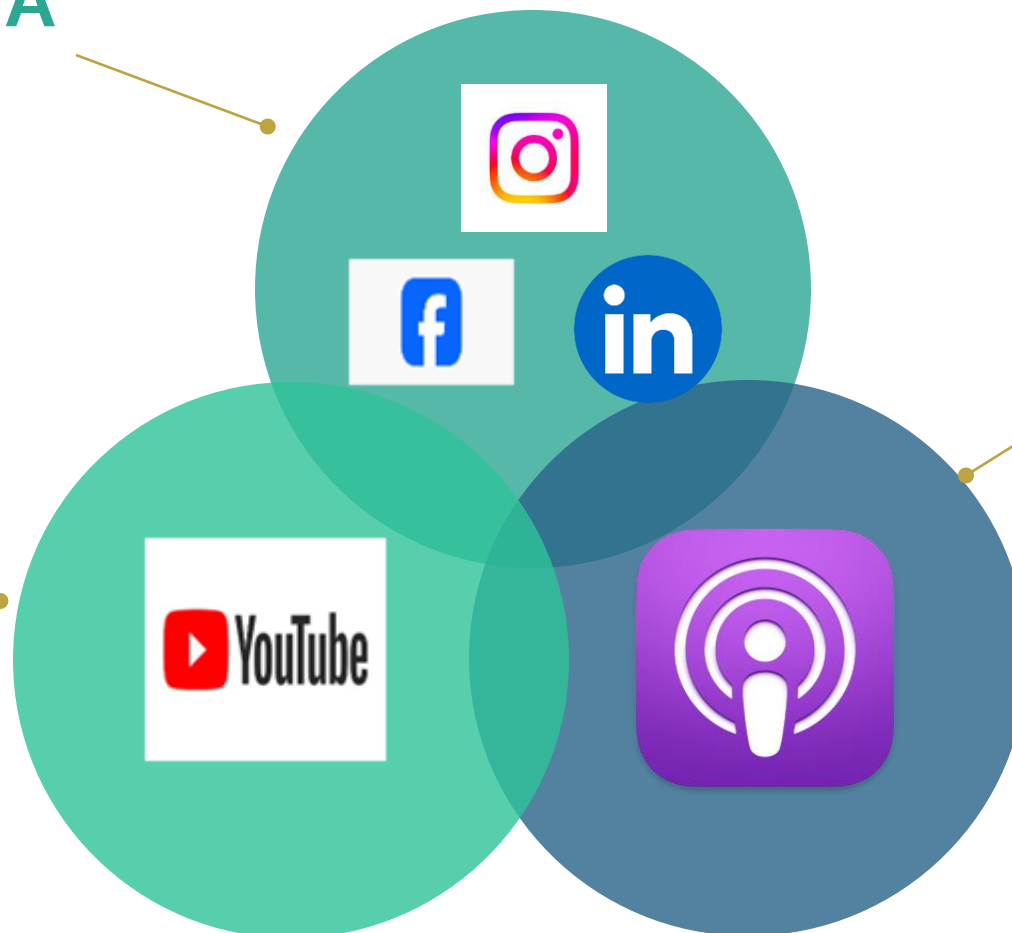
DIGITAL THREAT ASSESSMENT

The IMPORTANCE of OSINT

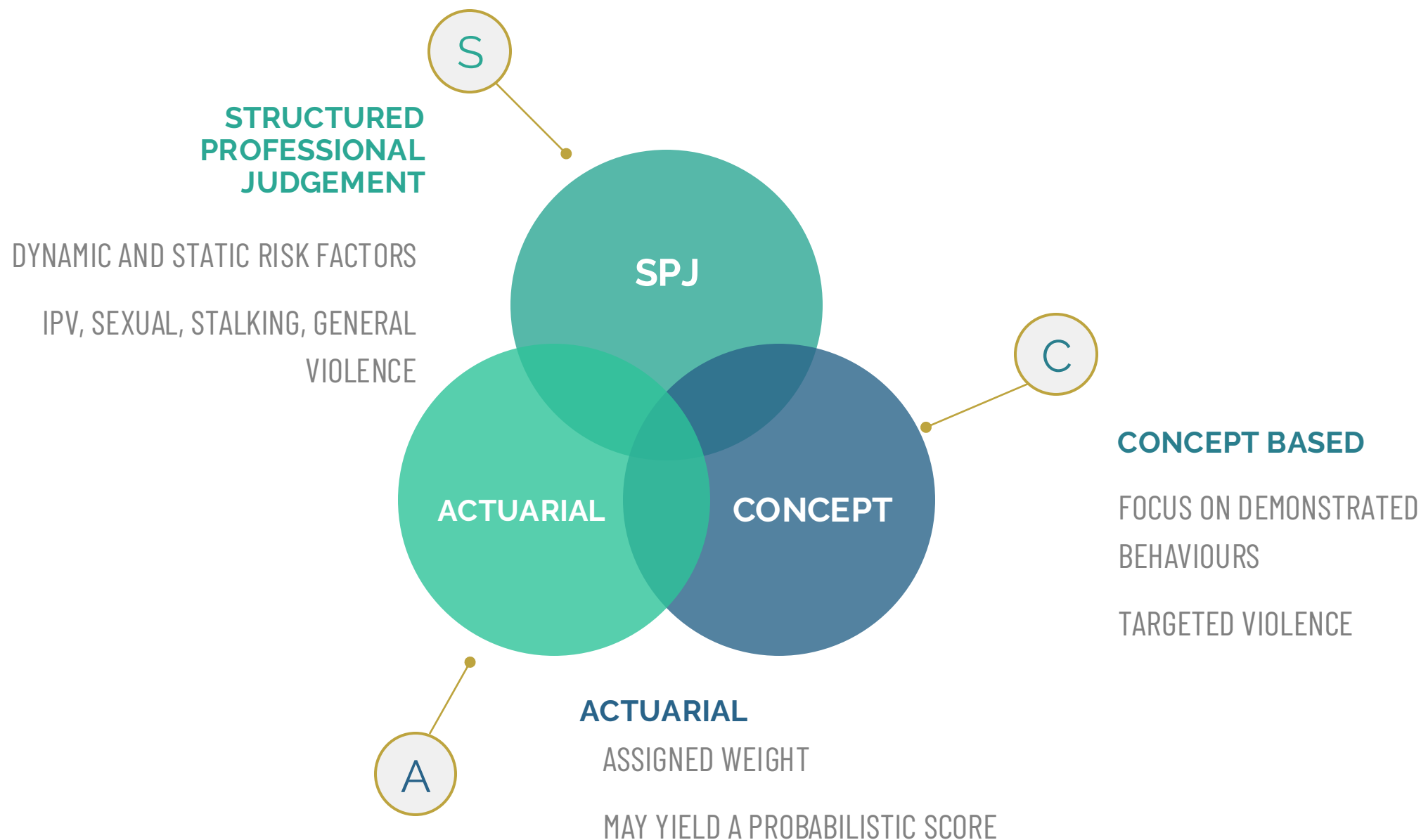
SOCIAL MEDIA

**PODCASTS OR
BLOGS**

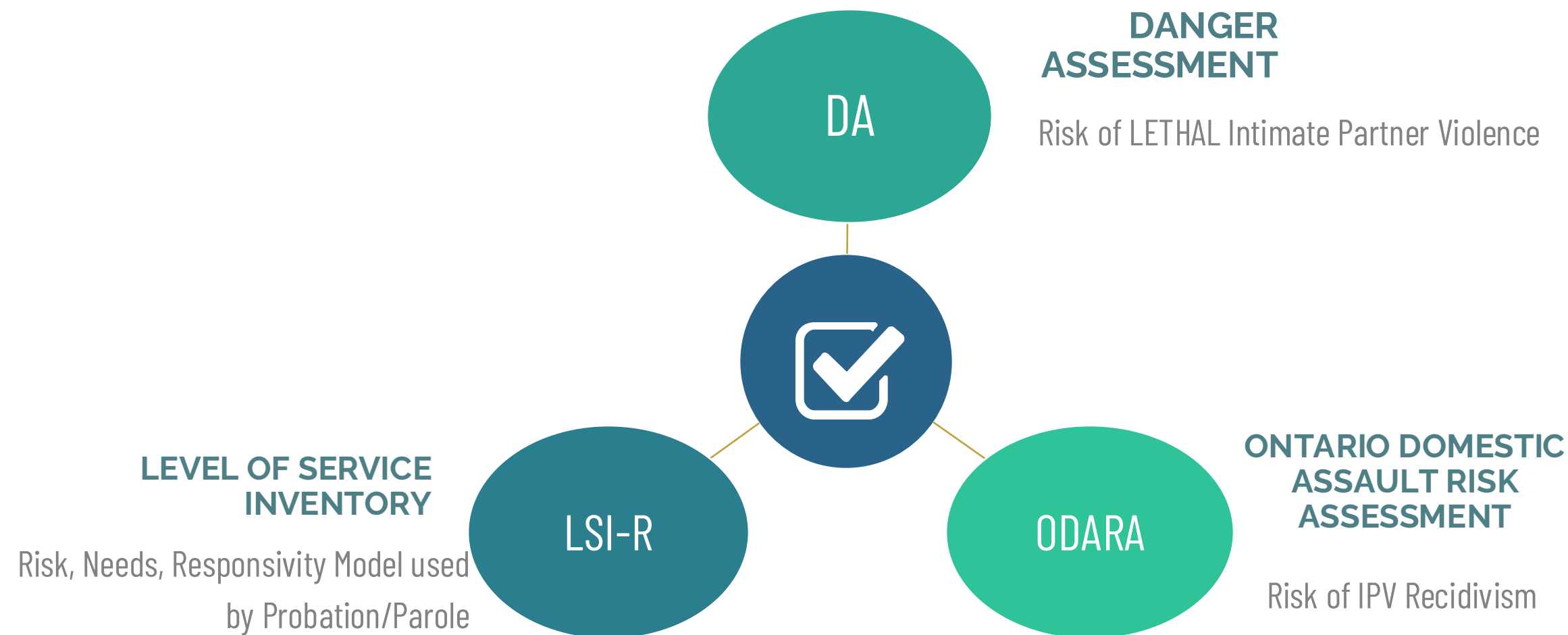
YouTube



APPROACHES TO BEHAVIOURAL THREAT ASSESSMENT



ACTUARIAL TOOLS



Structured Professional Judgment **Tools**



BSAFER
Second Edition

SARA
Version 3
MANUAL

SAM-V2

HOW CAN BTAM HELP?



Civil Justice

Protection of Victims

Family Court

Child Protection



Criminal Justice

Bail and Sentencing

Community Supervision



Treatment

PAR Programming

**Treatment for Criminogenic
Needs**



THREAT SHIELD

BEHAVIOURAL THREAT ASSESSMENT AND MANAGEMENT

ASSESS

MITIGATE

MANAGE



- **ASSESSING THREATS**

- THE B-SAFER
- RISK FACTORS
- LETHALITY

COERCIVE CONTROL

Coercive Control is not YET against the law in Canada – Bill C332

Coercive Control is NOT a “standalone” risk factor in the SARA or B-SAFER...but specific behaviours are contained within some of the risk factors

Recent studies have indicated that coercive control IS significantly associated with physical IPV.
(Hilton, Eke & Kim, 2023) and (Hilton & Radatz, 2025)

Oppression and Intimidation

ISOLATION

Controlling partner's relationships



GASLIGHTING

Controlling partner's finances

Manipulating children

Monitoring movements and activities



If you could have one SUPERPOWER, what would it be?

BSAFER

Second Edition

1

NATURE OF INTIMATE
PARTNER VIOLENCE

2

PERPETRATOR
PSYCHOSOCIAL
ADJUSTMENT

3

VICTIM VULNERABILITY

Brief Spousal Assault Form for the Evaluation of Risk

Kropp, Hart, & Belfrage

HOW RISK FACTORS INFLUENCE BEHAVIOUR



MOTIVATORS

Puts thoughts of violence on the table

Control

Revenge



DISINHIBITORS

Makes the cost acceptable

Hopelessness

Alienation



DESTABILIZERS

Disturbs cognitive functioning

Substance Use

Paranoia

B-SAFER RISK FACTORS

Section I : Nature of Intimate Partner Violence

VIOLENT ACTS
(actual or attempted)

History of IPV
History of IPSV
History of weapon use

VIOLENT
THREATS OR
THOUGHTS

Threats of harm/death
Stalking
Fantasies or plans to
harm or kill

ESCALATION

In severity
In frequency
In diversity

VIOLATION OF
COURT ORDERS

Specific to IPV
Community supervision
OR Conditional release
Contact, Geographical
conditions

VIOLENT
ATTITUDES

Support or condone IPV
Misogyny or
possessiveness
IPV as a resolution
Extreme minimization
or denial

B-SAFER RISK FACTORS

Section II : Perpetrator Psychosocial Adjustment

INTIMATE RELATIONSHIP PROBLEMS

Sudden or recent
separation
Partner wants to leave
Cannot cope with
dissolution
Partner in new
relationship

EMPLOYMENT PROBLEMS

Recently fired or laid off
Unstable or no
employment
Low income

SUBSTANCE USE PROBLEMS

Behavioural disinhibition
Induce conflict in
relationship
Interfere with social
functioning

SYMPTOMS OF MENTAL HEALTH PROBLEMS

Depression and suicidality
Behavioural instability
Anger or impulsivity
Paranoia

GENERAL CRIMINALITY

Violence outside of IPV
Non-violent criminality
Antisocial attitudes, Peers

B-SAFER RISK FACTORS

Section III : Victim Vulnerability Factors

INCONSISTENT
ATTITUDES OR
BEHAVIOURS

Minimization or denial of
abuse
Normalizing
Self-blaming
Social, religious or cultural
barriers or beliefs

EXTREME FEAR
OF
PERPETRATOR

Interferes with:
Ability, opportunity, or
motivation to take self-
protective action

INADEQUATE
SUPPORT OR
RESOURCES

Professional or social
services
Support from family or
friends
Finances or housing

UNSAFE
LIVING/WORK
SITUATION

Perpetrator knowledge
Frequent contact with
perpetrator
Insufficient physical
security

HEALTH
PROBLEMS

Physical health
Mental health
Substance abuse

HOW RISK FACTORS INFLUENCE BEHAVIOUR



MOTIVATORS

Puts thoughts of violence on the table

Control

Revenge



DISINHIBITORS

Makes the cost acceptable

Hopelessness

Alienation



DESTABILIZERS

Disturbs cognitive functioning

Substance Use

Paranoia



What MOTIVATORS have you observed in working with perpetrators of IPV?

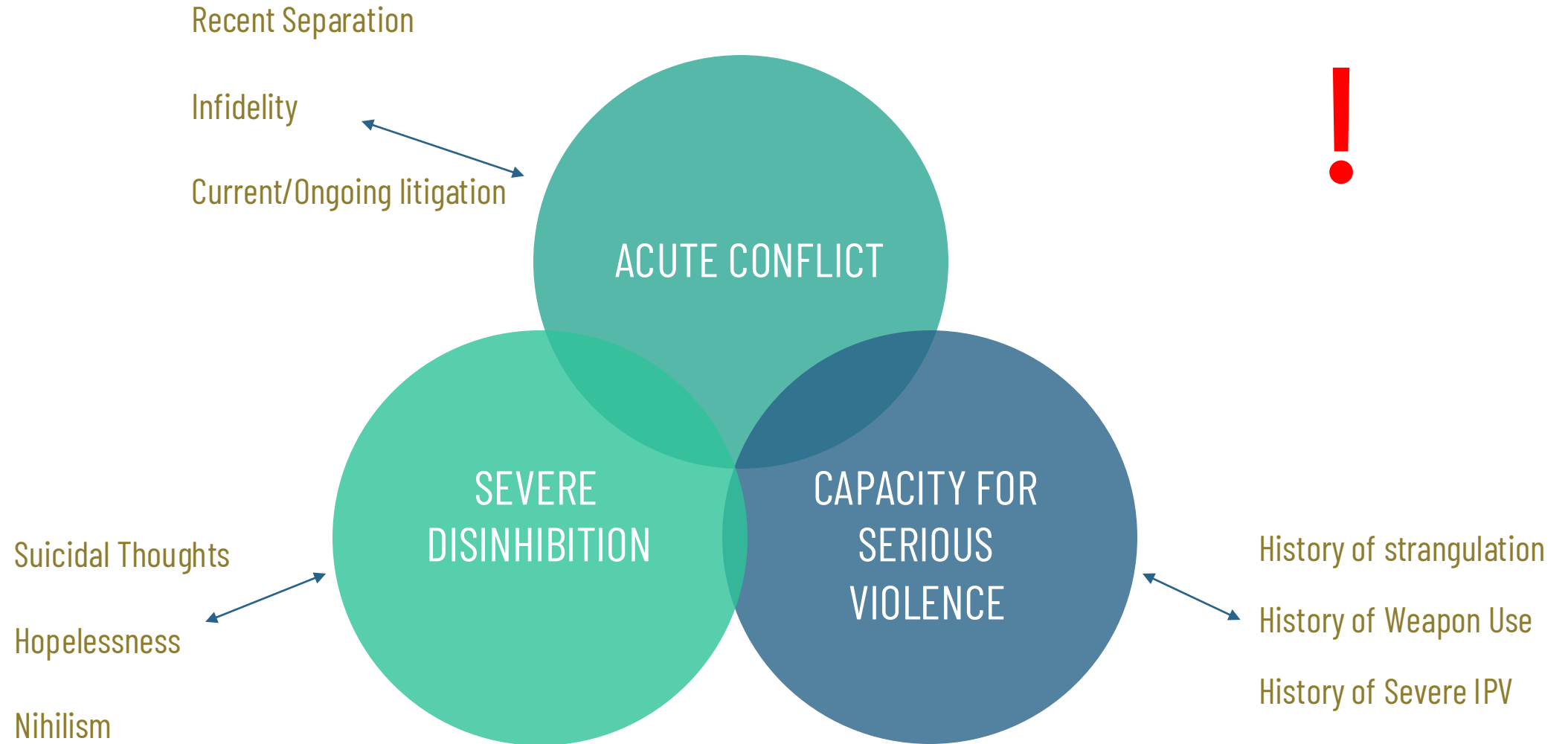


What DISINHIBITORS have you observed in working with perpetrators of IPV?



What DESTABILIZERS have you observed in working with perpetrators of IPV?

LETHALITY





What is your SPIRIT ANIMAL?



THREAT SHIELD

BEHAVIOURAL THREAT ASSESSMENT AND MANAGEMENT

ASSESS

MITIGATE

MANAGE



- **SCENARIO**
- SAMPLE CASE
- WHAT DO YOU THINK?



THREAT SHIELD

BEHAVIOURAL THREAT ASSESSMENT AND MANAGEMENT

ASSESS

MITIGATE

MANAGE

Adam is a 39-year-old former bank executive who has been married to Karina for 12 years. The couple have two children, aged 6 and 9. The climate within the family household has been tense over the past two years, after Adam lost his job after being charged and eventually convicted of *Fraud over \$5000* and *Utter Forged Document* for his role in a Ponzi scheme. Adam has a criminal record consisting of seven convictions for fraud and property related offences levied over three sentencing dates dating back ten years. Karina knew about Adam's record but thought he'd learned his lesson. Adam now works at his father in law's construction company. Never a big drinker in the past, Adam has been drinking more and more, and Karina suspects he may be using illicit drugs.



THREAT SHIELD

BEHAVIOURAL THREAT ASSESSMENT AND MANAGEMENT

ASSESS

MITIGATE

MANAGE

Karina has tried her best to keep the marriage and household happy and healthy, but she is wearing down. The stress of working, being the primary caregiver for the children, and Adam's increased substance abuse is taking its toll. Karina has been drinking more, too, and feels like she may be slipping into a depression. She finds herself grappling with her feelings for Adam. He's been yelling at her a lot lately...he is even showing signs of jealousy and mistrust that he never has before. Karina has had fleeting thoughts of leaving Adam, but she knows how hard it would be to take care of both kids on her income. She also worries about how her family would react, as her parents don't believe in divorce, and they've told her she needs to "*stick it out*" for the kid's sake.



THREAT SHIELD

BEHAVIOURAL THREAT ASSESSMENT AND MANAGEMENT

ASSESS

MITIGATE

MANAGE

Things got really bad a couple of months ago, when Karina finally broke down and told Adam that she had thoughts of leaving the marriage. They were at a social event, and both had been drinking. In the Uber on the way home, Adam grabbed Karina's arm and squeezed it very hard, then said *"If you think about leaving me, you'll regret it"*. When they got home, Adam pushed Karina against the wall and said *"Don't forget what I said"*. Adam has been following Karina to work, and he has even placed a GPS tracker on her car. When Karina asked Adam if they could go to counselling, he told her that they don't need it, and that if she *"wasn't talking garbage"* he wouldn't have to be trying so hard to *"keep her in line"*.



THREAT SHIELD

BEHAVIOURAL THREAT ASSESSMENT AND MANAGEMENT

ASSESS

MITIGATE

MANAGE

Things came to a head last week. During an argument over Adam's drinking, Karina told Adam that she was *"done with their relationship"*. Adam went to the garage and retrieved a wrench. He approached Karina and demanded that she attend their bedroom. Once inside, Adam held the wrench above his head and said, *"I dare you to say that again"*. Karina tried to leave the room, but Adam grabbed her wrist and twisted her arm, preventing her from leaving. He dropped the wrench and placed both hands around Karina's neck, pushing her against the door. He squeezed until Karina felt lightheaded before letting go. Adam left the house, and Karina called police.



What NATURE OF IPV Risk Factors are present in this case



**What PERPETRATOR PSYCHOSOCIAL
ADJUSTMENT Risk factors are present in this
case?**

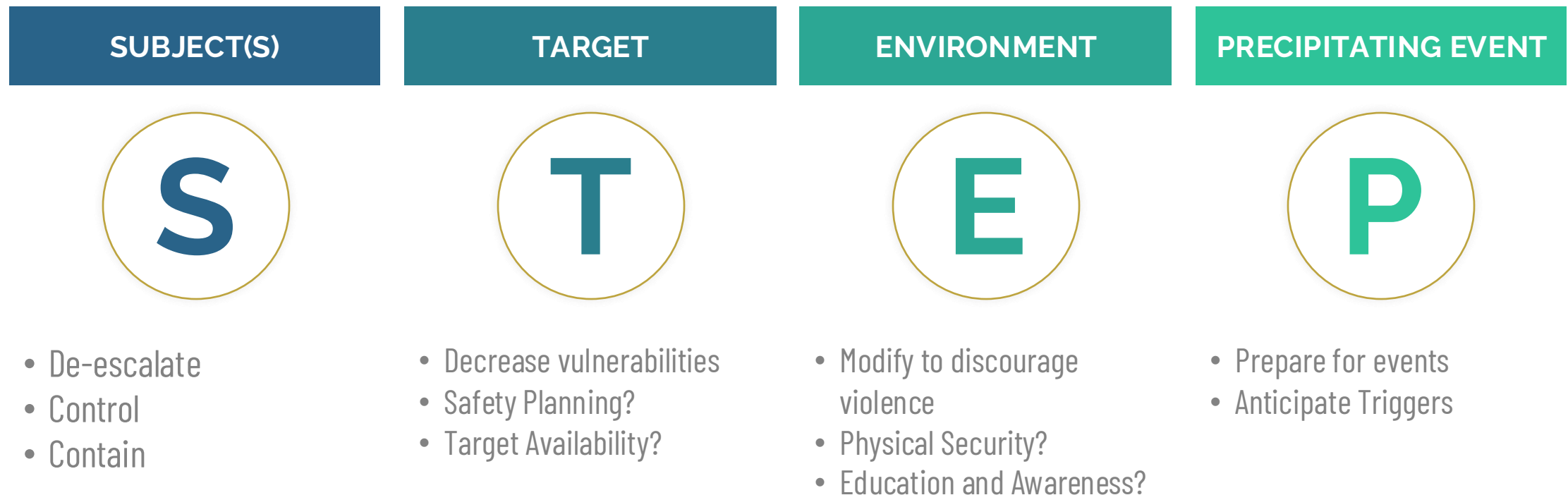


What VICTIM VULNERABILITY Risk Factors are present in this case?



Do you have any concerns about the potential for LETHALITY here? WHY, or WHY NOT?

MANAGING THREATS



HOW RISK FACTORS INFLUENCE BEHAVIOUR



MOTIVATORS

Puts thoughts of violence on the table

Control

Revenge



DISINHIBITORS

Makes the cost acceptable

Hopelessness

Alienation



DESTABILIZERS

Disturbs cognitive functioning

Substance Use

Paranoia



What MANAGEMENT STRATEGIES would you be considering in this case?



What Management Strategies have you found helpful IN YOUR WORK?



Audience Q&A

① The Slido app must be installed on every computer you're presenting from



ASSESS MITIGATE MANAGE
THREAT SHIELD
BEHAVIOURAL THREAT ASSESSMENT AND MANAGEMENT



www.threatshield.ca



christine@threatshield.ca



(905) 965-0152